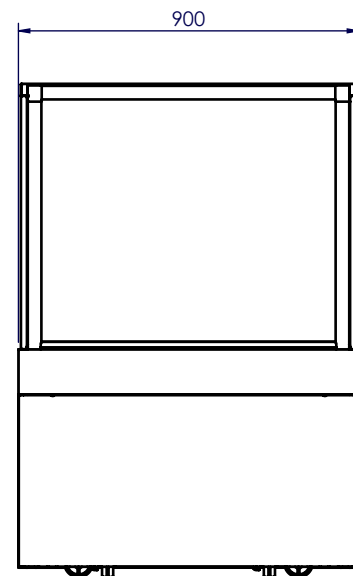
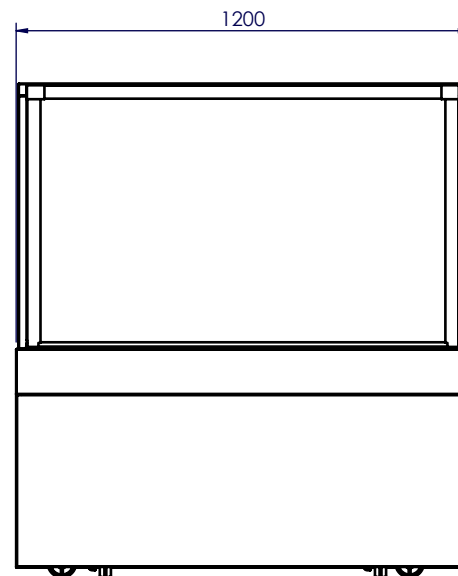


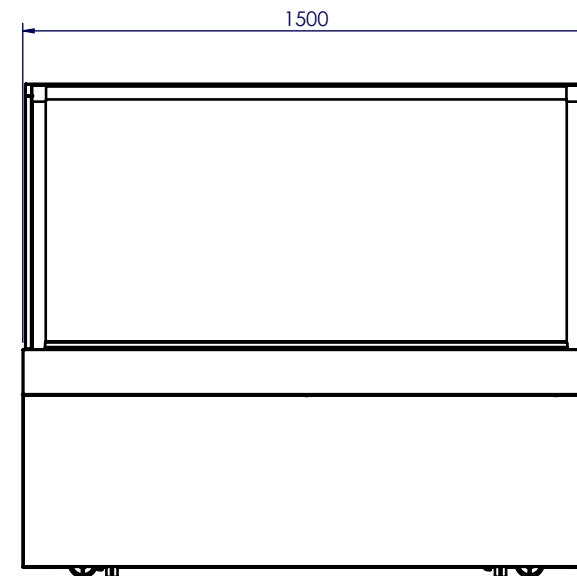
\* HEIGHT EXCLUDES  
CASTORS & LEGS  
  
FITTING WITH ADJUSTABLE LEGS, ADD 25mm - 50mm  
FITTING WITH ADJUSTABLE CASTORS, ADD 25mm - 40mm



MODEL	REMOTE DUTY
FDM900r	450W @ -5°C SST



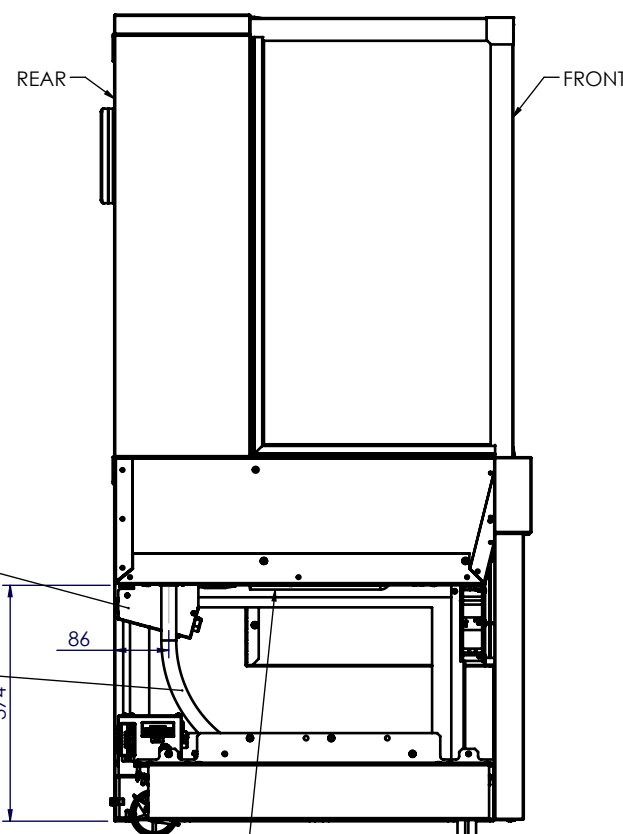
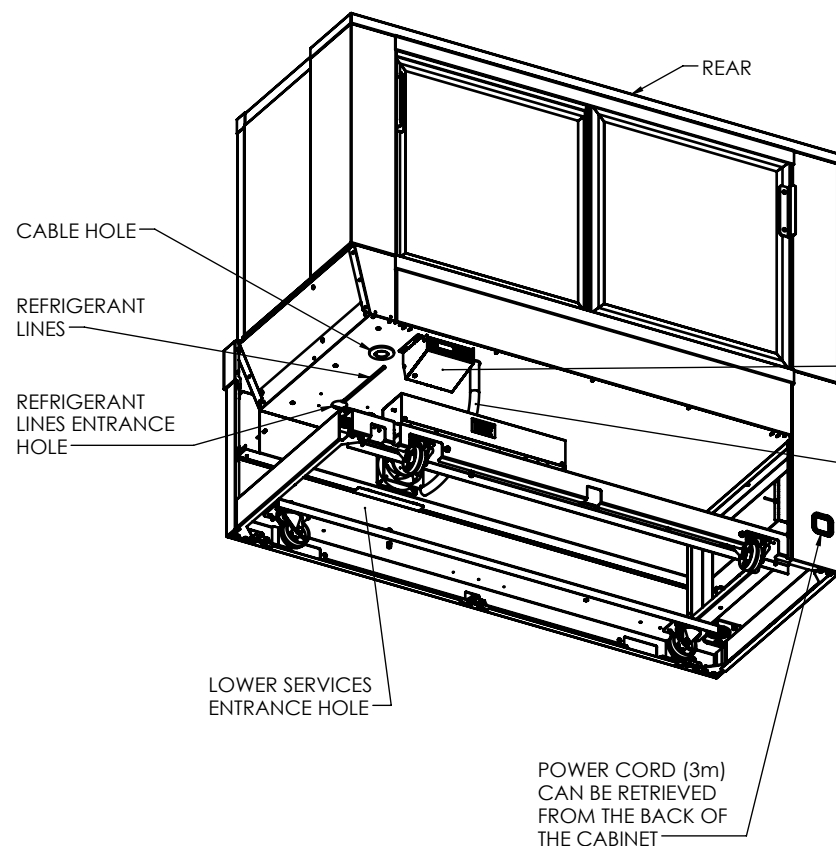
MODEL	REMOTE DUTY
FDM1200r	540W @ -5°C SST



MODEL	REMOTE DUTY
FDM1500r	620W @ -5°C SST

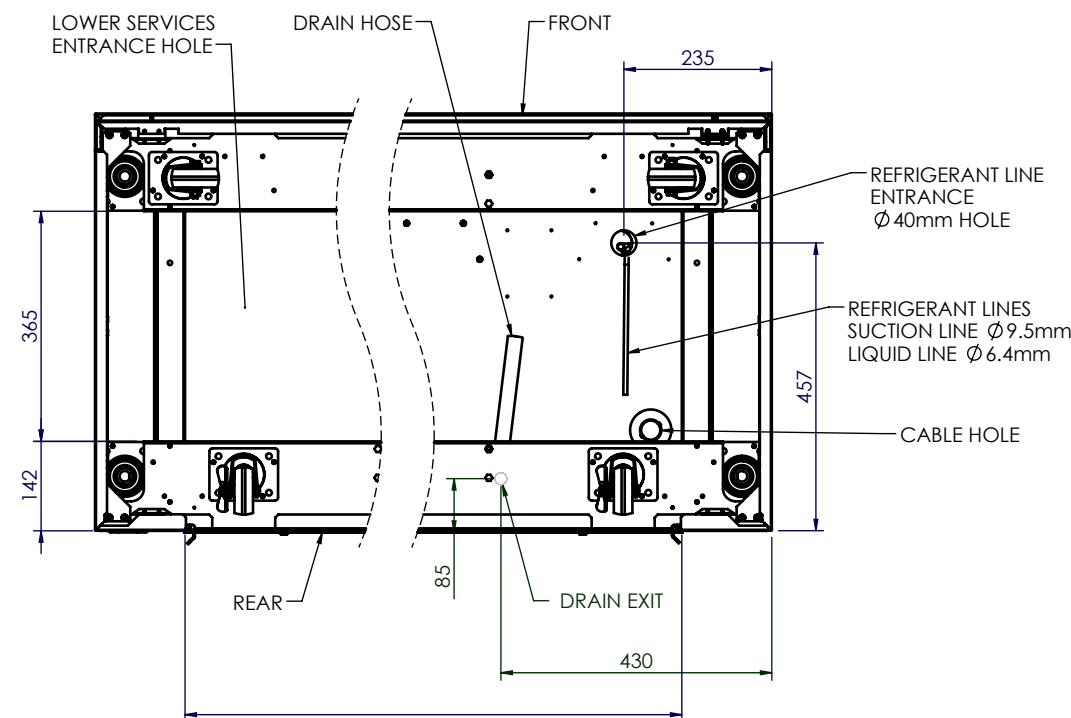
**CONFIDENTIAL**  
This information is highly confidential  
and is the exclusive property of  
SKOPE Industries Limited.  
**COPYRIGHT RESERVED ©**  
This drawing must not be used for any  
purpose other than that expressly permitted  
by the owners and must be returned to  
SKOPE Design Department.  
is the registered trade mark of SKOPE Industries Limited.

FDM1500r  
SIDE AND REAR COVER  
HIDDEN FOR CLARITY



SIDE VIEW

REFRIGERANT LINES  
SUCTION LINE Ø 9.5mm  
LIQUID LINE Ø 6.4mm



BOTTOM VIEW

NOTE:  
REFER PRN2362 REMOTE GUIDELINES FOR FURTHER INFORMATION

**SKOPE**  
Industries Limited  
66 Princess St, PO Box 1091  
Christchurch, New Zealand  
Ph: +64 (3) 983 3800  
Fax: +64 (3) 983 3896

Unless Otherwise Specified  
Folded dimensions: Overall  
Linear Tolerances: ±0.5mm  
Angular Tolerances: ±0.5°  
Units: Millimetres  
Supplier Number:  
**REMOVE ALL BURRS AND SHARP EDGES**

Material:  
1:  
2:  
  
Finish:  
1:  
2:  
  
Drawn: R Ofa 28/03/2018  
Check 1: K Salazar 18/04/2018  
Check 2: N/A  
Approved: GW Hinman 20/04/2018  
Drawing Filename: RSD-FOOD DISPLAY  
X-Ref Filename: ASY1-50

Drawing Name:  
**RSD-FOOD DISPLAY**  
  
Description:  
**REMOTE SERVICES DRAWING  
FOOD DISPLAY CABINETS**  
  
Path: \Refrigeration\Cabinets\FoodDisplay\  
Change:  
Changed: R Ofa  
DCN:  
Scale: N.T.S.  
Sheet: 1 of 1  
A3  
Revision  
18/04/2018  
**A.-**